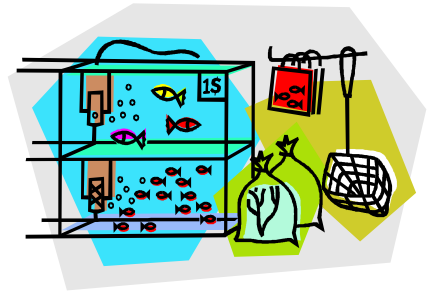


**BAYSIDE NEWSLETTER**                      **September - October 2010.**

Next Meeting Friday 24 September 2010 starting at 7.30pm at Redlands IndigiSapes Centre

Guest speaker in September will be Leo O'Reilly. Leo has been a keen sports fisherman for many years. He discovered native aquarium fish during a visit to the Northern Territory about ten years ago and the rest is history.



Many people in Australia have aquariums. But most of the fish they keep are from South America, Africa, or Asia. Few people realise that Australia even HAS native aquarium fish! Even fewer realise that each creek in Australia has its own unique fish patterns that are found only in that creek. Leo's talk "All the Colours of the Rainbow" will discuss the range of Australian aquarium fish, and highlight the importance of maintaining the genetic integrity of fish in local streams.

(Learn more about our guest speaker on page 2.)

~~~~~  
**PRESIDENTS REPORT**  
**Annual Report for the WPSQ AGM**

Steve Homewood

2010 proved to be a year of consolidation as we continued to engage with the community, throughout the year, with talks, walks and displays on the issues of protection of the local fauna and flora. Our membership is reasonably stable, very vocal on environmental matters as recently witnessed on overdevelopment issues concerning low-cost housing sites that overrode normal planning controls, a better outcome for wildlife was achieved by the weight of submissions and representation.

Our committee was recently re-elected unopposed but like most Branches we would like others to come forward for these positions, to enable fresh ideas to reinvigorate and challenge our community and reduce workload. The issue of

succession is a difficulty faced by most volunteer groups and not easily resolved but is becoming critical to survival. The dedication of our committee and members made 2009-2010 very productive and enjoyable.

Through the medium of our monthly speakers, we have launched Mangrove watch in Cleveland, travelled to Carnarvon Gorge and Alaska, examined the state of koala teeth and had a graphic presentation on diseased turtles. Martin Fingland drew a crowd of 85 to his native animal talk, the wombat attracting the most attention. We also had talks about a new project to re-introduce native fish back into certain Redland creeks, the importance of wildlife corridors and stock routes.

*Continued over*

*Presidents report continued*

There was disappointment when our fully booked Seaweeek cruise was cancelled due to inclement weather. The cancellation of course necessitated a great deal of extra work. Canoeing Tingalpa creek to the Leslie Harrison Dam wall was a great success with great scenery and wildlife despite suburbia being not far away.

We have continued with our themed, guided walks around the local area that we hope participants then share with their companions, if these areas are not utilised easy access could be lost.

Our annual World Environment Day dinner is now its 6th year, our guest speaker Dr Darryl Jones highlighted the fact that groups like WPSQ are respected, are needed in the democratic process and have certainly tempered, changed or even stopped many of the issues that conflict with our environmental standards. Issues such as Traveston Dam, sand mining on North Stradbroke, protection zones in Moreton Bay Marine Park, stock routes and duck hunting have all been influenced by the society's tenacity and expertise on environmental issues.

One of the highlights of the year was undoubtedly hosting the WPSQ AGM, which thanks to our hardworking committee and other volunteers was extremely successful; we had strong support from Redland City Council who are very forward thinking on environmental matters.

Publication of our newsletter, wildlife diary and koala news was maintained throughout the year.

Seagrass Watch continues its excellent monitoring of the Bay's health and has collected a great deal of excellent data. Our branch now also has its own Mangrove Watch site at Cleveland.

Our wildlife and bushland continues to be pressured by increasing population and its insatiable appetite for resources that are

finite. There is already conflict as mining groups attempt to plunder our bushland for gas and coal. Community groups must continue to work together to be vigilant against the excesses and lobby hard to prevent this degradation before more of our flora and fauna is decimated for short- term gain.



## **Leo O'Reilly Biography**

Leo O'Reilly joined the Australia and New Guinea Fishes Association (ANGFA) and his love of small native fish quickly became an obsession. Living in QLD and travelling regularly to the Northern Territory and northern Queensland only helped to inflame his passion.

Within a year he was field trip coordinator for the Queensland Club and two years later became president.

One room of his house is dedicated to fish tanks and his yard is full of ponds and tubs which are also full of fish. His real passion is on exploring remote areas, spending time in the bush, and seeing areas that many others don't. His interests also extend to educating others on the wealth of fish life they don't see, photographing the fish he catches and growing aquatic plants. His fishing exploits feature regularly on the pages of aquarium magazines. He specialises in keeping those fish that are hard to get, listed as vulnerable/endangered, or difficult to breed.



## **Dogs Day Out Raffle**

The raffle run at the Dogs Day Out at Capalaba in August was won by D Humphreys of Cleveland.

Thank you to all who participated. It was great to meet you all and your friendly dogs.



## Weed - Brazilian Nightshade (*Solanum seafortianum*)

Yes! A native of Brazil, this is a perennial naturalized ornamental vine, often climbing over fences or shrubs, up to 5 m. high.

The dark green leaves are up to 13 cm long, non-prickly, deeply lobed, often cut to midrib, with leaf-stalk 2-4 cm long.



Photo Garry Wilson -  
<http://www-public.jcu.edu.au>

Large bunches of flowers form in pendant clusters, mainly in spring and autumn, star-shaped, 2-3 cm in diameter, are lilac to bluish-purple with a tuft of yellow stamens in the centre.

The globular berry fruits are fleshy bright red, 8-12 mm diameter. The hairy seed is round to kidney shaped. Fruits and leaves are toxic if eaten.

Ranked 55th in the Qld Herbarium's list of 200 Invasive Naturalised Plants in Southeast Queensland (2002) with a medium to high invasive score of 4.0, as is the wild tobacco tree (*Solanum mauritianum*). (5.0 is maximum score) Neither are "declared weeds" by State or local council. (C I)



From *The Kedron Brook Babbler* April 2010  
published by WPSQ Kedron Brook Branch

## Bayside Branch Wildlife Animal Day walk



Where: - Days Road Redland Bay

When: - Sunday October 3rd

Time: - 6.30am

Duration: - 1.5 hours.

Cost: - Gold Coin for each participant

Early start to catch the birdlife in the area.

Bring Binoculars, hat, water, good shoes. Refreshments available after the walk.

Register for exact meeting point ring Doreen on 3206 0368 or Steve 3824 0522.



## Exciting New Project for Wildlife Bayside: Saving the Sunfish

The Ornate Sunfish, *Rhadinocentrus ornatus*, has a highly restricted geographic distribution and is classified as 'Potential Threatened' by the Queensland Department of Primary Industries. The Brisbane City Council area supports only 2 known populations and Redlands has a few more.

The purpose of this project is to.

1. Identify the location of populations of this species and potential suitable habitat, and
  2. Raise the public awareness about the species and the threats upon the same
- WPSQBB is looking for volunteers who will be trained to find and record the locations of Ornate Sunfish.

This is a collaborative project between WPSQBB, Brisbane City Council, Redland Council, B4C, frc Environmental and Australian and New Guinea Fishes Association (ANGFA). ANGFA and frc Environmental will be providing volunteers training and guidance.

WPSQBB is coordinating the project and also providing volunteers.

Anyone interested can contact us at [bayside@wilife.org.au](mailto:bayside@wilife.org.au) or we will collect volunteers names at the September talk.

## Mangrove Watch Cleveland

Mangrove Watch survey teams help to monitor the magnificent mangroves of Moreton Bay and is Wildlife Queensland's new monitoring project for mangrove health - If you like mud and would be able to spend 3-4 mornings or afternoons a year contributing to the health of Queensland's coastline and marine environments, we want to hear from you.

Why not join the Bayside Branch Mangrove Watch on their next monitoring session at Cleveland.

**When** Sunday 24th October at 3.30pm finish in 2hrs approx.

**Where** Cul-de-sac at the end of Long Street Cleveland.

**Wear** Enclosed footwear, old clothes (you could get muddy)

**Bring** Water, mosquito repellent, hat, sunscreen.

Reward checking on the health of the mangroves, good company and the refreshments at the end.

Contact Steve on 3824 0522



## Thank you for your assistance

Thank you to those who helped to person our stall at the recent market day.

Also a big thank you to those generous members who have donated saleable goods to help the branch with fund raising.

Your donations and the efforts of Maureen, Doreen, Kathy, Colleen and Charmaine have turned unwanted goods in to cash that can support our conservation efforts.



## Reminder

Wildlife in Your Community WPSQ AGM and members get together  
17 to 19 September 2010



Hurry. Check your recently received 'Wildlife News' for lift out details and registration form.



## Recycling

Last month we reported on recycling of Energex's "retired" timber poles and how the timber was finding a new lease of life.

This month we look at something a whole lot smaller - mobile phones. Did you know that mobile phones contain many elements that can be recycled?

The recycling of mobile phones keeps all those batteries and the nasty metals they contain out of landfill.

Surprisingly metals such as gold, silver and copper can be recovered from the circuit boards. The amount recovered being equivalent to the mining of many hundreds of tonnes of ore thus recycling is conserving our natural resources. And we should not forget the plastics that are also recycled from the mobiles.

Many of us update our mobile phone on a regular basis so why not let us recycle the old one for you. All you have to do is bring your old one along to a meeting or drop off to one of the committee members and we will ensure it is recycled correctly.



## Would you prefer to receive your Newsletter by email?

If you would please let us know by emailing - [wildlifebb@bigpond.com](mailto:wildlifebb@bigpond.com)

STRADBROKE ISLAND SLAUGHTER  
2010 will mark a very dark time for our  
beautiful island's wildlife.

*Jack Jackson, Wildlife Carer*

Dog attack, random shootings and car strikes where the animal victim is left to die and not reported, one would associate these events with some country town full of rednecks not a small sand island that is earmarked for national park status, just offshore from a major capital city.

7 macropods and 4 koalas have been attacked by dogs some were killed while others died in care as a result of the attack. Most the attacks except for one koala took place in residential areas or areas set up as campsites. The one koala that was not in these areas was a huge male that was aged between 8-10 years old. The attack occurred At camp site 7 on Flinders beach. This site is about 500metres from the start of the dog off the leash zone. This issue alone I believe is in need of urgent attention. The majority of camp sites on Flinders beach back onto known habitat for koalas as well as swamp wallabies and grey kangaroos.

I feel a knot in my stomach when I see programs like "The Great South East" saying that Stradbroke is dog friendly and you can let them run around on Flinders without restraint. I am seeing more and more tourists disembarking the barges with large dogs hanging out of the back of 4wd utes. This issue is not just confined to Flinders beach its also at Main beach especially at the southern end of the island where there is no way to control this problem. Campers can let their dogs run amuck with a large population of grey kangaroos feeding within very close proximity to camp sites. Also I have seen agile wallabies there even though to my knowledge they are not officially listed on the island.

Recently I have had reports by locals usually given too late, (days or weeks after the sightings) of roos being shot on main beach, the carcass has been washed out to sea by the time I get to investigate. Although the last time this was reported to me in time I photographed and reported 2 large male greys and 1 large male agile wallaby with gunshot wounds. Sadly it is very difficult to investigate these shootings without witnesses. There has allegedly been approximately 7 roos shot in one area of the mines recently. I understand the mines and police are investigating this incident.

Almost all of the car strikes are reported to us by a caring local or a passing tourist who has cared enough to stop and check the animal .Very rarely does the person who hits the animal report it or seek help. As I am writing this article another koala has just been killed on the road just outside of Point Lookout, reported by a passing local and the koala has been run over several times.

I am seeing more and more kangaroos feeding on the grass bank right in front of the food outlets at Point Lookout gorge walk. The rescue service have attended several incidents where a roo has been chased off the cliff. The latest one the roo landed on a rock ledge far below, where it lay with a noticeably broken leg until a wave washed it in to drown, with distressed rescuers watching on helplessly.

We on the volunteer rescue service are feeling very distressed and overwhelmed by all this carnage as well as not being able to visualize an end to it. Even when the island achieves national park status, there will be an increase in traffic and residential areas will still have dogs and the police are not going to do a car by car search for weapons. Is Stradbroke Island going to go down the same path of the Redlands too little too late?

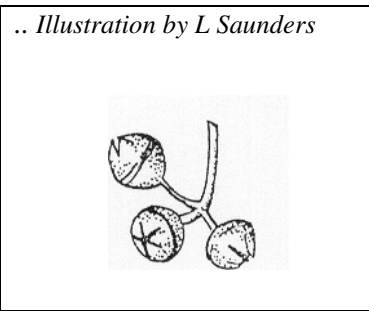


**Wildlife Preservation Society of Queensland Bayside Branch**

Email- [bayside@wildlife.org.au](mailto:bayside@wildlife.org.au)

Website - <http://www.branches.wildlife.org.au/bayside>

**Meeting Information**  
**When** Last Friday of each month  
(excluding December & January)  
**Where** Redlands IndigiScapes Centre  
17 Runnymede Road, Capalaba  
**Time** 7.30 pm



*Opinions expressed, implied or inferred in this newsletter are those of the author and not necessarily those of the Society*

**Committee & Contacts**

|                           |                   |              |
|---------------------------|-------------------|--------------|
| President                 | Steve Homewood    | 3824 0522    |
| Vice President            | John Payne        | 3206 0368    |
| Secretary                 | Simon Baltais     | 3822 4943    |
| Treasurer                 | Maureen Tottenham | 0418 197 160 |
| Executive                 | Don Baxter        |              |
|                           | Donna Edwards     |              |
|                           | Doreen Payne      |              |
| Bayside Newsletter Editor |                   |              |
|                           | Doreen Payne      |              |
| Wildlife Diary Editor     |                   |              |
|                           | Simon Baltais     |              |
| Koala News Editor         |                   |              |
|                           | Paulette Jones    |              |
| Librarian                 |                   |              |
|                           | Pat Comer         |              |

**Wildlife Diary Dates**

September 7 Threatened Species Day

September 17 to 19  
WPSQ AGM and members get together

Friday 24 September  
Bayside Branch General Meeting  
IndigiScapes, Runnymede Rd, Capalaba

Sunday 3 October  
World Wildlife Day walk

Friday 29 October  
Bayside Branch General Meeting  
IndigiScapes, Runnymede Rd, Capalaba

**Membership Application**

**Wildlife Preservation Society of Qld Bayside Branch**

Date / /

-- New  or Renewal

Membership types  
\_\_\_ \$30.00 Single  
\_\_\_ \$20.00 Concession  
(pensioner or full student)  
\_\_\_ \$45.00 Family or non profit group  
\_\_\_ \$12.50 Junior (under 13 years)

Name \_\_\_\_\_

Address \_\_\_\_\_

\_\_\_\_\_ P/c \_\_\_\_\_

Phone No \_\_\_\_\_

Optional  
Subscription: Wildlife Australia magazine  
(Educational, informative & great photography)  
\_\_\_ \$42.00 per year inc GST (four issues)  
posted within Australia  
\_\_\_ \$65.00 per year posted overseas airmail

Email address \_\_\_\_\_

Special Interests \_\_\_\_\_

Donation (optional) \$ \_\_\_\_\_  
For campaign .....  
(Bayside does not have tax deductible status)

**Total amount enclosed** \$ \_\_\_\_\_

As a member I agree to be bound by the rules of the society

**Signature** \_\_\_\_\_

**Payment by Credit Card**

Card type-Visa\_\_\_ Mastercard\_\_\_

Card No \_\_\_\_\_

Expiry Date \_\_\_/\_\_\_

Name on the Card \_\_\_\_\_

**Signature** \_\_\_\_\_