

PO Box 427 Capalaba 4157  
bayside@wildlife.org.au

## BAYSIDE NEWSLETTER

March – April 2012

Next Meeting Friday 30 March 2012 starting at 7.30pm at Redlands Indigiscapes Centre

Did you know that you can personally contribute to enhancing environmental values on your property and by extension the welfare of wildlife on your property?

Your property, irrespective of size, could be part of a wildlife corridor that allows wildlife to move safely from one habitat to another and could be a haven to some.

Through partnership with RCC (Habitat Protection Programs) council can support you with advice and resources to achieve environmental improvements on your property. Find out more when Maree Manby, Senior Extension Office, Environmental Education Unit from Redland City Council explains the many programs council run and how they can help individual home owners to contribute to a better environment. Maree will demonstrate the achievements of others and how you can get involved.

---

### PRESIDENTS REPORT

Steve Homewood

<http://www.wildlife.org.au/news/2012/qlddelection.html>

As forecast the environment has not figured strongly in the current Queensland state elections in fact there has been scant regard for it in most policy statements. Surely it is our varied landscape and biodiversity that should attract interest in this state and therefore have long term benefits not only for the economy but flow through to ensure strong environmental protection. At the moment the focus is exploitation of resource underground for short term gain, with no thought given to the “green resource” which needs to be sustained for generations. I fear that whoever governs, our wildlife and its habitat will continue to be under duress from the consequences of short-sighted policies. Our challenge is to ultimately temper these policies to ensure our wildlife gets the protection it deserves. Wildlife Qld News has succinctly outlined these issues at

Unfortunately heavy rain prevented our walk around the Carbrook Wetlands recently but it has been rescheduled for the 22nd April, maybe the rain will have stopped by then.

Most of you will be aware of the recent sad passing of Bob Douglas, a tireless, passionate, campaigner for the environment. We will all miss you my friend, but we owe it to you to continue the commitment, education and enthusiasm that has achieved so much for our wildlife over many years.

*“We have to shift our emphasis from economic efficiency and materialism towards a sustainable quality of life and to healing of our society, of our people and our ecological systems. ~Janet Holmes à Court”*

## Learn that Weed

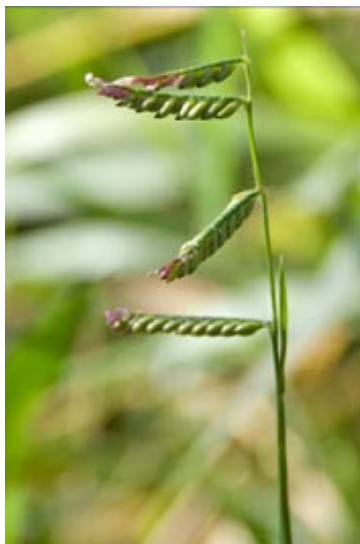
Signal Grass  
(*Brachiaria decumbens*)

Signal grass is a low-growing tufted perennial, reclining or lying on the ground with trailing stems that root at the nodes. Bright green, moderately hairy leaves 7-20 mm wide and 5-25 cm long.

Leaf blades lanceolate . Typical 'signal' seed head (Seed heads almost at right-angles to the axis rather like a railway signal) with 2-7 racemes, 1-5 cm long, borne on an axis up to 10 cm long.

Ranked 120th out of the 200 species listed in the Qld Herbarium's 'Invasive Naturalised Plants in SE Queensland', the weed has an invasive score of 3.5 out of 5.

A pasture grass, Signal Grass doesn't make the State Weed list. However, it is amongst the BCC's environmental weed class listing; Class R weeds—reduce population as part of routine maintenance.



The dense cover of signal grass tends to overgrow other plants, rather like Guinea grass and Para grass does if allowed.

(CI)

From *The Kedron Brook Babbler* October 2011  
published by WPSQ Kedron Brook Branch



## Clean Up Australia

The Glider Reserve at Alexandra Hills was the site chosen for **Clean Up Australia** this year.

We had nine people turn up in spite of the threatening rain. One group went off to collect rubbish from some of the alternate reserve entrances while a second group moved from the park up towards Redland Bay Road. Here we broke into two groups moving through the area adjoining the road and collecting a great deal of rubbish including quite a lot of items that could be recycled.



Most of the rubbish was found in drains that ran off the road. The volume of water these drains have carried in recent times had taken rubbish well into the reserve and presented a few challenges for our rubbish collectors.

After two very hot hours we had collected 14 bags of rubbish, a caravan awning, garden tools, children's table and chairs plus a shopping trolley. We all then met for morning tea, exchanged tales of our finds and remarked on how vibrant the reserve was looking from the recent rains.



## 50<sup>th</sup> Anniversary Wildlife Queensland

Don't miss this. Mark it in your diary.

*Talking Wildlife*, (a forum to celebrate Wildlife Queensland's 50<sup>th</sup> anniversary) will be held on Friday 7 and Saturday 8 September 2012 at Bardon Conference Centre, Brisbane. Registrations open in April.

*Talking Wildlife* will feature a variety of presenters on a diversity of topics. Check the website for more information [www.wildlife.org.au](http://www.wildlife.org.au)

## Science at the Grand View Hotel

### *Celebrating World Wetlands Week 2012*

The Grand View Hotel at Cleveland was the venue for Bayside branch's World Wetlands Week celebration seminar.

Guest speakers included Dr Peter Davie who is the principal author and curator for the Queensland Museum. Peter talked about the stunning and informative new edition of the extraordinary best seller Wild Guide to Moreton Bay which is a comprehensive and colourful guide to the wildlife of Moreton Bay.

Copies of this updated and expanded publication were available for sale and proved very popular.

Paul Hodda, Chairman of the Australian Whale Conservation Society, was also a guest speaker and introduced participants to Whales, Majestic Visitors to Moreton Bay which was an exposé of their journey between Antarctica and the Coral Sea.



*Dr Peter Davie © D Payne*



## Some events for your Dairy

Sunday 22 April Walk at Carbrook (above)

Friday 27 April Annual General Meeting

Saturday 26 May World Environment Day dinner

Saturday 2 & Sunday 3 June IndigiScapes weekend.

## Walk with Wildlife

To celebrate world Wetland day and in conjunction with Logan Branch, we have organised a guided tour by Margaret Greenway to Carbrook Wetlands. 7.30 am Sunday 22 April. (The walk was originally scheduled for February but was rained out?)

We have been granted special access, it will be hosted by some one who has undertaken significant research in this area and is a leading authority on ecology of the Wetlands.

**Cost:** \$2.00

**When:** Sunday 22<sup>th</sup> April

**Time:** 7.30am.

**Where:** Carbrook - Meeting at the far end of Lagoon Rd, off Tevoit Road Carbrook

**Bring:** As this a Wetland area you are advised to bring, water, hat, sunscreen, mozzie spray, binoculars, reasonable footwear and clothing that offers protection against the possibility of insect bites

This area is not normally readily accessible so we will start the walk on time, gates will be locked behind us.

Morning refreshments are available at the conclusion of the walk.

Please register for this event by phoning Steve on 3824 0522 or emailing [bayside@wildlife.org.au](mailto:bayside@wildlife.org.au)



## Vale

On Saturday 3 March 2012 a large group of family and friends gathered to say farewell to Robert (Bob) Douglas. Robert lost the battle with an aggressive disease but I know everyone will remember the Robert we loved and admired as he was such a warm, friendly and giving person and as all agreed a true gentleman.

## Duane's story

I was out on the headland at Point Lookout in early February when about 400 metres out I noticed something on the surface. I had to use full 300 mm zoom to see what looked like a turtle with a float.

I watched through my camera until I thought I saw a flipper move then raced back to the car and drove down to see the lifeguards. One young guy met me back at the lookout and he confirmed the sighting through some powerful binoculars and said he'd get his partner and jetski and go out for a look.

I was almost convinced the turtle was not moving by the time they arrived. Anyway as they got closer the turtle dived down and surfaced again in about one minute or so. The lifeguards followed it out further and further (probably more than a kilometre) I couldn't see much.

All this took almost an hour and I was certain they would come back with bad news. I met them at the club and listened to their story of the turtle eventually tiring until they were able to untangle the floats and reef anchor attached to it. Apparently it was biting their surfboard and they spotted a small shark also. Lucky the surf was rough and the beach closed for swimmers.

It's great that it all worked out well.



*Floats and reef anchor that were attached to the turtle*

## Mangrove Watch Cleveland March 2012

You can help the Mangrove Watch survey team to monitor the mangroves of Moreton Bay. Wildlife Queensland's monitoring project collects valuable data on mangrove health.

Why not join the Bayside Branch Mangrove Watch on their next monitoring session at Cleveland. Spend a couple of hours with us contributing to the understanding of the health of Queensland's coastline and marine environments.

**When** Sunday 18<sup>th</sup> March 2012 at 11.30am

**Where** Cul-de-sac at the end of Long Street Cleveland.

**Wear** Enclosed footwear, old clothes (you will get muddy)

**Bring** Water, mosquito repellent, hat and sunscreen.

**Your Reward** Checking on the health of the mangroves in good company.

Join us for refreshments afterwards

**Contact Steve on 38240522 to register your interest in helping.**

### Wildlife Rescue

If you find sick or injured wildlife in Redland City please contact Wildlife Rescue Redlands 24 hours on Telephone 07 3833 4031

For Marine Strandings please report to Telephone 1300 130 372

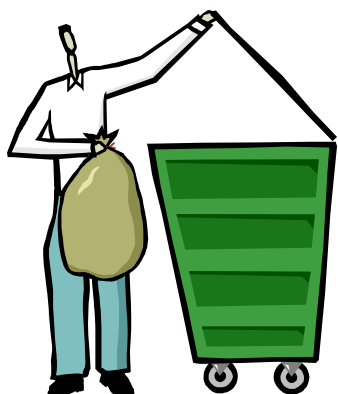




## Maureen's recycling tips

Cardboard products you can put in your recycling bin including general boxes, tissue, cereal and washing powder boxes, milk, juice cartons and tetra packs but place waxed cardboard in general waste.

Place glass bottles and jars in your recycling bin but china, crockery, ceramics, drinking glass, light bulbs, mirror glass, window glass, heat-proof cookware and cutlery should go in general waste.



Try to reduce rubbish in a week! Take note of how many bags of rubbish your household produces in one week, and see if you can produce less the following week.

Buy food in bulk, reduce the products you buy with excess packaging, and don't forget to recycle. You could also start a worm farm or compost heap so food scraps don't end up in your bin. Every little bit counts!

Don't put recyclables in a plastic bag. Recycling facilities won't open the bags. The bags of items just go to general waste so your good work of thinking you are recycling is wasted.



Say no to plastic bags. Take your own reusable bag with you when you shop.

Turn off you appliances when not in use.

## Annual General Meeting

Financial Members are reminded that the meeting on April 27<sup>th</sup> will be Bayside branch Annual General Meeting.

Your participation is vital to ensure that the society meets its legal obligations. A Proxy Form has been printed here so that if you are not able to attend the meeting you can still participate by completing and return the proxy form. You may nominate any financial member of the branch as your proxy.

Financial members who would like to become more involved in management of the Branch are encouraged to talk to the president or secretary about how you might assist.

A Nomination Form is included with this newsletter to allow you to nominate suitable persons for the positions on the committee.

All forms should be sent by 13<sup>th</sup> April 2012 please to the 'Returning Officer' at WPSQ PO Box 427 Capalaba Qld 4157.

THE WILDLIFE PRESERVATION SOCIETY OF QUEENSLAND BAYSIDE BRANCH (QLD) Inc

### PROXY FORM

I,.....of.....  
.....Postcode.....

being a financial member of the Wildlife Preservation Society of Queensland, Bayside Branch hereby appoint


.....  
as my proxy to vote on my behalf at the (Annual) General meeting to be held on (date).....

Signature :- .....

Is this proxy a general proxy? (Yes/No).  
If 'No', indicate if this form is to be used against or in favour of the following specific resolution:

.....  
.....  
.....

Strike out whichever is not desired.

<p><b>Meeting Information</b></p> <p><b>When</b> <u>Last Friday</u> of each month (excluding December &amp; January)</p> <p><b>Where</b> Redlands IndigiScapes Centre 17 Runnymede Road, Capalaba</p> <p><b>Time</b> 7.30 pm</p>	<p><i>Opinions expressed, implied or inferred in this newsletter are those of the author and not necessarily those of the Society..</i></p>	<p><i>Illustration by R Opala</i></p> 
--	---	---

**Committee & Contacts**

President	Steve Homewood	3824 0522
Vice President	John Payne	3206 0368
Secretary	Simon Baltais	3822 4943
Treasurer	Maureen Tottenham	0418 197160
Executive	Don Baxter	
	Doreen Payne	
	Michael Lusic	
Bayside Newsletter Editor		
	Doreen Payne	
Wildlife Diary Editor		
	Simon Baltais	
Koala News Editor		
	Paulette Jones	
Librarian		
	Pat Comer	

**Wildlife Diary Dates**

Friday 30 March Bayside Branch General Meeting IndigiScapes, Runnymede Rd, Capalaba
Sunday 22 April Wildlife walk at Carbrook
Friday 27 April Bayside Branch General Meeting Includes AGM IndigiScapes, Runnymede Rd, Capalaba

=====

**Membership Application**

**Wildlife Preservation Society of Qld Bayside Branch**

Date / /

-- New  or Renewal

Membership types

- \$30.00 Single
- \$20.00 Concession  
(pensioner or full student)
- \$45.00 Family or non profit group
- \$12.50 Junior (under 13 years)

Name \_\_\_\_\_

Address \_\_\_\_\_

\_\_\_\_\_ P/c \_\_\_\_\_

Phone No \_\_\_\_\_

Optional

Subscription: Wildlife Australia magazine  
(Educational, informative & great photography)

- \$42.00 per year inc GST (four issues)  
posted within Australia
- \$65.00 per year posted overseas airmail

Email address \_\_\_\_\_

Special Interests \_\_\_\_\_

Donation (optional) \$ \_\_\_\_\_

For campaign .....  
(Bayside does not have tax deductible status)

**Total amount enclosed** \$ \_\_\_\_\_

As a member I agree to be bound by the  
rules of the society

**Signature** \_\_\_\_\_

 <p><b>Payment by Credit Card</b></p> <p>Card type— Visa__ Mastercard __</p> <p>Card No _____</p> <p>Expiry Date ____/____</p> <p>Name on the Card _____</p> <p><b>Signature</b> _____</p>
---