



# Koala News



Wildlife Preservation Society of Queensland Bayside Branch  
Volume 11 Issue 4 August 2009

---

## SOUTH EAST QUEENSLAND REGIONAL PLAN 2009-2031 WHAT DOES IT MEAN FOR KOALAS?

The State Government has released the new SEQ Regional Plan, with long-term implications for Koala habitat protection and management. Within the document, the Queensland Government commits to increasing the current extent of mature and actively regenerating Koala habitat by 2020.

The Plan includes a map (Map 4) showing “major koala population and habitats”, with urban and rural landscapes identified as Koala habitat, along with the bushland areas. While this is not a statutory map and has no regulatory effect, the recognition of these additional “habitat strata” as significant for retaining the SEQ Koala population is a great leap forward.

Tackled in the Plan as a separate and significant issue, the protection, reinstatement and enhancement of Koala habitat and movement opportunities is given weight. This bodes well for the new Koala State Planning Policy due for release later in 2009, which thankfully is said to be backed by more accurate habitat mapping than its predecessor.



For the Redlands, the SEQ Regional Plan excludes the 300ha Southern Redland Bay Identified Growth Area and a 570ha area has been removed from the Urban Footprint in the Thornlands area. Koala population decline statistics and the recent recommendations of the Koala Task Force, along with submissions on the draft Plan by Redland City Council, Redland residents and conservation groups effected this change which is intended to boost the land available for Koala habitat and rehabilitation.

In recognition of its environmental values, Redlands allocation of regional growth is smaller under the Plan, although with the removal of the future development areas at Redland Bay and Thornlands, there will be a heavier reliance on infill development to facilitate the allocated population growth.



Infill development could have an effect on the Redlands urban Koala population and will need to be carefully managed.

## SEQ REGIONAL PLAN KOALA CONSERVATION PRINCIPLE, POLICIES AND PROGRAMS

### Principle

Koala populations in the region are enhanced through the protection, management and the achievement of a net gain in bushland Koala habitat and through managing conflict with urban development.

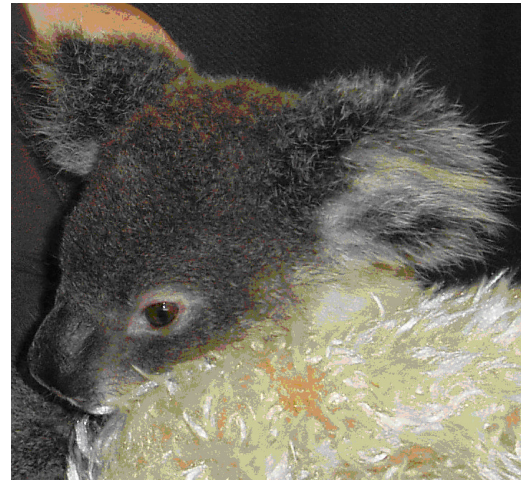
### Policies

- 2.2.1 Prioritise the establishment and implementation of consistent planning requirements for the protection of Koala habitat areas across the region.
- 2.2.2 Ensure development impacts on Koala habitat throughout SEQ are offset through the delivery of a net benefit to Koalas, including through the expansion of habitat on lands identified as suitable for rehabilitation.
- 2.2.3 Ensure planning and development caters for Koala movement between conserved areas of bushland Koala habitat.
- 2.2.4 Prioritise the protection and rehabilitation of Koala habitat areas outside the Urban Footprint as a key source of long-term habitat for the region's Koala population.
- 2.2.5 Ensure planning and development seeks to maintain or enhance Koala habitat values in areas of bushland habitat, areas suitable for rehabilitation and other areas of value to Koalas.

### Programs

- 2.2.6 Identify existing and potential Koala habitat areas suitable for protection, transfer, acquisition and rehabilitation in a State Planning Policy for Koala conservation.
- 2.2.7 Establish development codes within a State Planning Policy for Koala conservation to ensure development addresses adverse impacts on Koalas and Koala habitat.
- 2.2.8 Establish guidelines within a State Planning Policy for Koala conservation to ensure Koala conservation is considered within plans for Regional and Local Development Areas and strategic Plans.
- 2.2.9 Identify, monitor and report on health and risks to Koala populations across the region.

**An update on orphan Phoenix from the previous Koala News:** Little Phoenix never recovered his health despite the best efforts of carer Sam Longman. He sadly was euthanised at Australia Zoo in March 2009.



### Comment

When this above photograph of Sam the Koala and his rescuer David was beamed around the world it was seen as a beacon of hope for all those in Victoria, both human and animal, who had been affected by these unprecedented and disastrous fires. Life would get better for all.

Here in SEQ we are fighting a different destroyer. Development is taking the koala habitat. Numbers of koalas are at a dangerously low level and continued survival uncertain. A natural disaster such as a bush fire could be all it takes to finish off the job started by habitat destruction, dogs and motor vehicles.

**If you would like to contribute to future editions of the Koala News, please contact Paulette Jones**  
[paulette@biodiversity.tv](mailto:paulette@biodiversity.tv)

Opinions expressed in this newsletter are those of the author and/or contributors and are not necessarily those of the Society.